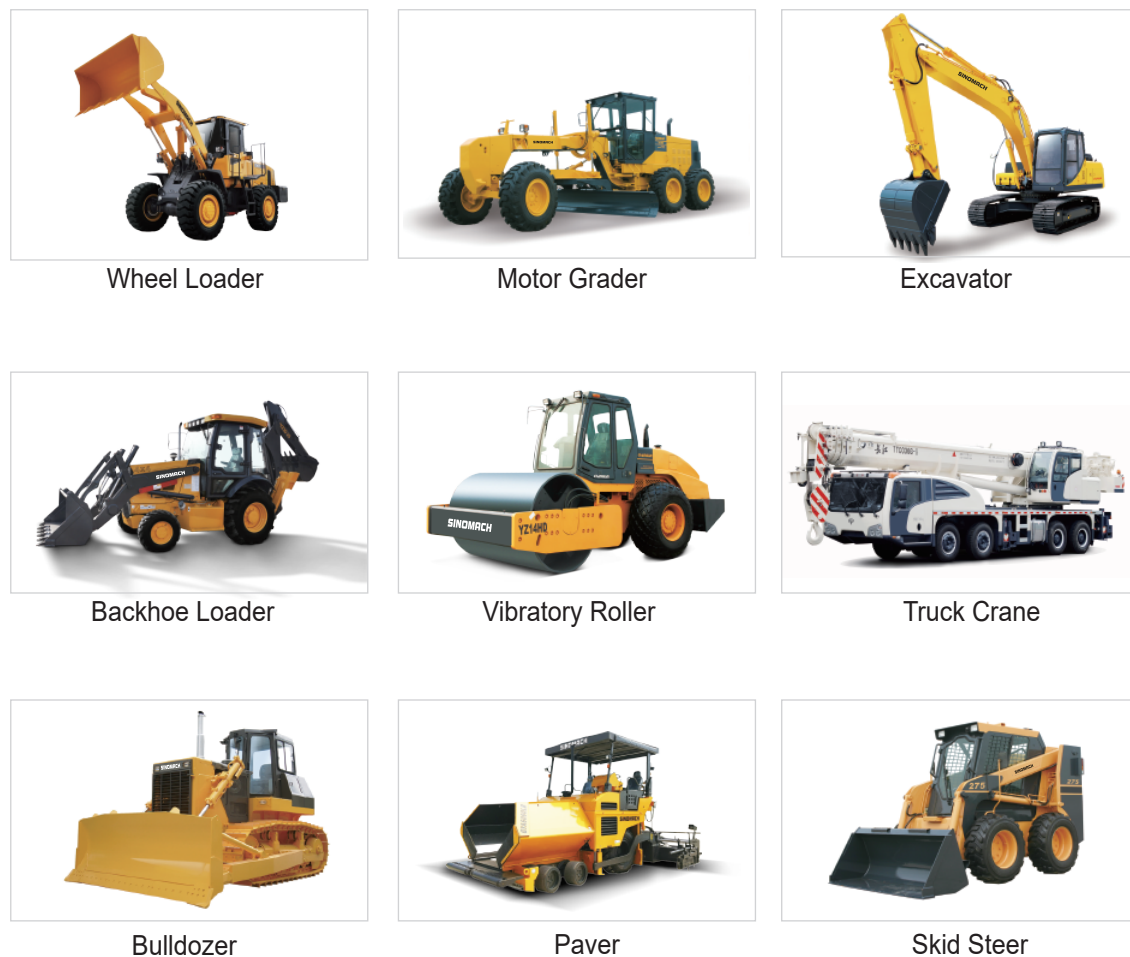
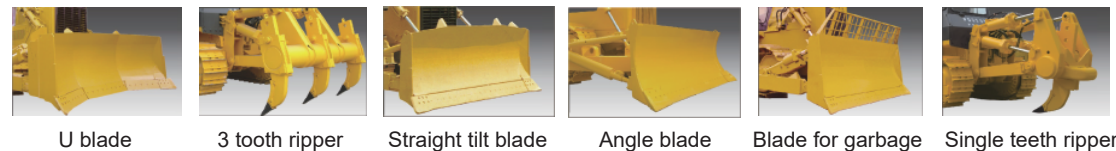


Optional Attachment



(额定功率) Rated power: 257kW@1800rpm (整机重量) Weight: 37200kg



- The appearance of the vehicle is based on optimization design.
- Higher engine power reserves efficiency, bigger torque output, lower fuel consumption, while better reliability.
- Hydraulically controlled drive, automatically speed regulating and non-stop gear shifting.
- 3-element, single stage, single phase torque converter for higher efficiency and bigger capacity.
- The novel hexahedral cab offers excellent visibility, the powerful ventilation and unparalleled dust-free.
- The final drive uses triangle Spline and tip relief, crowned gear drive for enhanced balance and the stability during power transmission and added life
- New blade is more durable and capacious
- Alarming monitoring system is efficient and reliable
- Implement controls are piloted to minimize operating effort



SINOMACH-HI International Equipment Co.,Ltd.

Add: No.898, West Huanghe Road, Changzhou, Jiangsu,  
P.R. of China

P.C: 213136

Tel: 86-519-86781288 86752400

Fax: 86-519-86781387

Http://www.sinomach-hi.com

E-mail: sales@changlin.com.cn service@changlin.com.cn

### 发动机(ENGINE)

型号.....康明斯 NTA855-C360S10  
 Model.....Cummins NTA855-C360S10  
 型式.....增压立式四冲程  
 Type.....Turbocharged, aftercooled, Four-Stroke  
 额定功率 Rated power ..... 257kW@2000rpm  
 最大扭矩 Max. torque .....1440N.m@2000rpm  
 缸数-缸径×行程 .....6-φ139.7×152.4mm  
 Number of cylinders-bore×stroke.....6-φ139.7×152.4mm  
 启动方式.....24V,11kW 电动机启动  
 Starting method ..... Electric starting 24V/11kW  
 最低燃油消耗量 Min fuel consumption ratio.....245g/kw·h

### 传动装置 TRANSMISSION SYSTEM

液力变矩器.....三元件, 单级, 单相  
 Torque converter.....3-element, single-stage, single-phase  
 变速箱.....行星齿轮, 多片离合器, 液压结合强制润滑式, 前进三档后退三档。  
 Transmission.....Planetary gear, multiple-disc clutch, hydraulic actuated, forced lubrication by gear pump, 3 forward and 3 reverse speeds.  
 中央传动.....螺旋伞齿轮、飞溅润滑  
 Bevel gear.....Helical bevel gear, splash lubricated  
 转向离合器.....湿式多片离合器, 弹簧压紧, 液压分离  
 Steering clutch.....Wet, Multiple disc, Spring loaded, hydraulically released.  
 转向制动器.....湿式, 带式, 液压助力联动操纵  
 Steering brake.....Wet, band brake, operated with hydraulic booster  
 最终传动.....直齿轮, 二级减速, 飞溅润滑  
 Final drive.....double reduction, splash lubricated

### 行驶速度 TRAVEL SPEED(km/h)

	1st	2st	3st
前进 Forward	3.6	6.6	11.5
后退 Reverse	4.4	7.8	13.5

### 工作装置液压系统

#### HYDRAULIC SYSTEM OF WORK EQUIPMENT

工作压力 Working pressure.....14Mpa  
 额定流量 (2000r/min) .....355L/min  
 油泵 Pump.....齿轮泵 Gear pump

### 行走装置 UNDER CARRIAGE

驱动轮 Sprocket.....镶块式大链轮 Segmented  
 支重轮数 (每侧) .....7(5单, 2双)  
 Number of track rollers(each side).....7(5Single, 2double)  
 张力机构 Track tension.....黄油涨紧 Hydraulic-adjusted  
 \*驱动轮, 支重轮, 托轮和引导轮均采用浮动油封  
 Floating seals are used in all sprockets, track rollers, carrier rollers and front idlers

### 工作装置 WORK EQUIPMENT

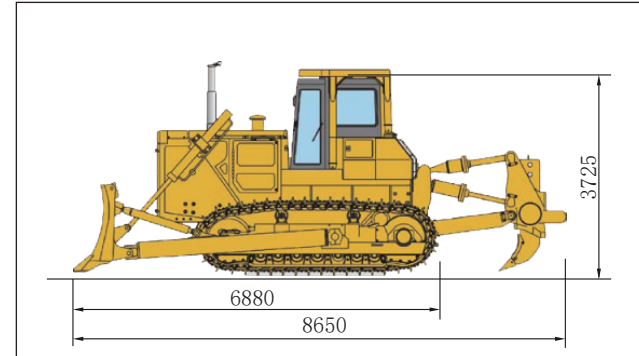
	直倾铲 Straight-tilt blade	角铲 Angle blade	半U铲 Semi-U blade
推土板形式 Blade type.....			
铲刀宽度 Blade Width.....	4130mm	5000mm	4130mm
铲刀高度 Blade height.....	1590mm	1140mm	1710mm
最大切土深度 Max.drop below ground...·	560mm	630mm	560mm
最大侧倾量 Max.Tilt.....	1000mm	500mm	1000mm
铲刀容量 Blade capacity.....	10m³	6m³	11.9m³

### 履带 TRACK

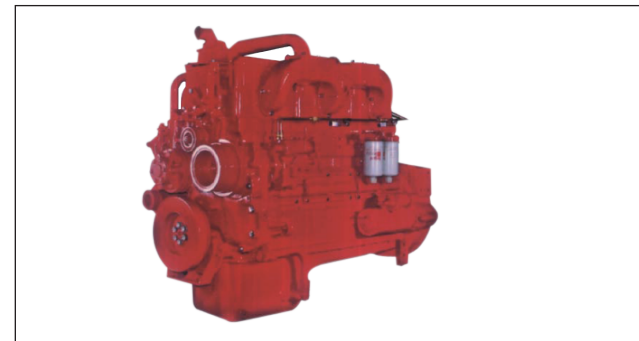
型式 Type.....密封式 单履齿 Sealed, single grouser  
 节距 Track pitch.....228.6mm  
 宽度 Track width.....560mm  
 履带板数 (每侧) Number of track shoes(each side).....41  
 履带接地长度 Length of track on ground.....3150  
 离地间隙 Ground clearance.....500  
 履带中心距 Track gauge.....2140

### 松土器 RIPPER

型式 Type.....单齿Single Shank/三齿 Three Shank  
 最大松土深度 Max.dig below ground..... 470/543mm  
 最大提升高度 Max.lift above ground..... 965/883mm  
 重量 Weight..... 3252/3802mm



### Engine

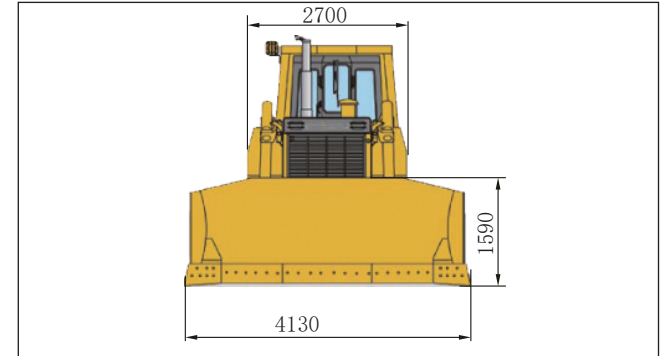


- Pulse exhaust manifold for improving performance and emission. With a high torque reserve and a low speed under the maximum torque condition for a good adaptation.
- High quality cast iron and special designed valve guide for the seal performance and durability.
- Robust and precise balance design for crankshaft.
- Advanced turbocharger and air-air after cooler technology.
- 4 valves per cylinder for high power and low fuel consumption.

### Hydraulic Torque Converter



- GTU320 torque converter is of 3-element, 1-stage, 1-phase, centripetal turbine type with simple structure but good technology. It provides high power efficiency, great penetration, big capacity and less loss when the turbine idles.
- GTU320 hydraulic torque converter is a newly developed product with the improvement made to the material, process and layout based on introduced Japan Komatsu technology. It features simple architecture, easy maintenance, low noise, excellent reliability.

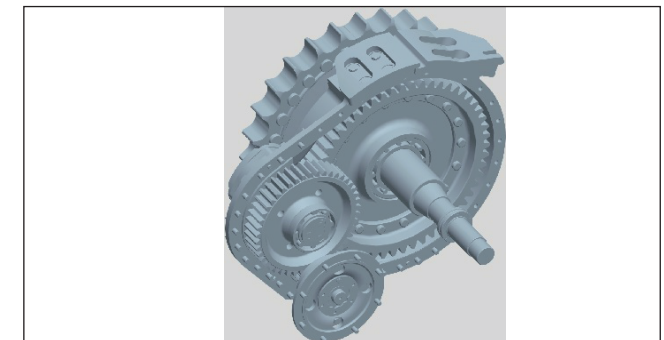


### Transmission



- This machine is equipped with transmission of planetary gear and rotary lockup multi-disc clutch, hydraulically engaged and force lubricated. Forward 3 speeds and reverse 3 speeds can be gained by actuating hydraulic control valve

### Final Drive



- We, as the first domestic company, master the technology in the manufacturing tip relief, crowned gear which features heavy load capacity, stable drive and long life.